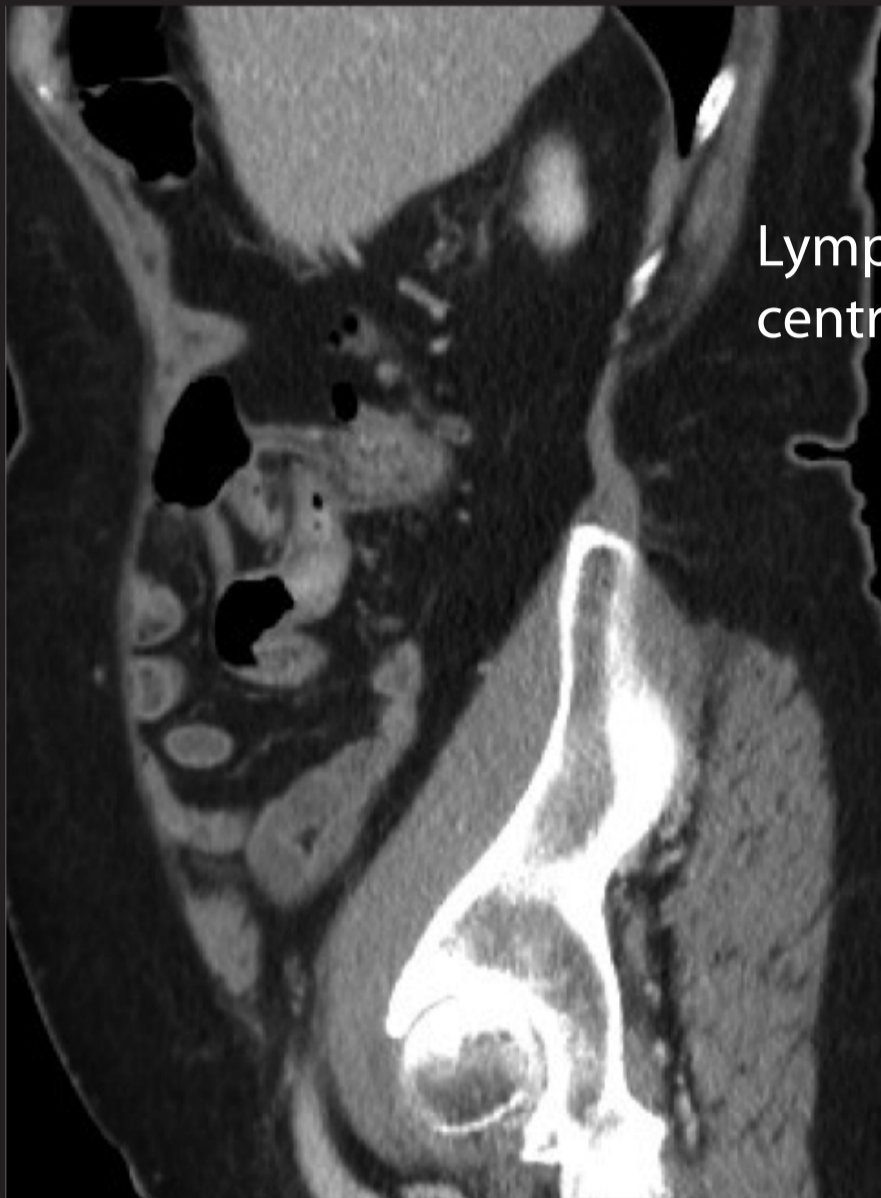


Carcinoid tumour of midgut.

Sagittal reformatted CT images (top) of a terminal ileal tumour with adjacent node. Typical midgut neuroendocrine tumour - the tumour itself is often difficult to see on CT but the adjacent nodal mass is more obvious and often contains central calcification and produces a desmoplastic reaction in the mesentry which may itself cause intestinal obstruction.



Lymph node mass with central calcification

Axial image showing tumour

